

Paper 5

1a. Examine the note of melancholy in Arnold's poetry with suitable illustrative references.

15

or

1b. Discuss *Kubla Khan* as a poem about the poetic process.

or

1c. Is there an element of hope or despair in Shelley's poetry? Support your answer with suitable illustration.

2. Explain either of the following passages with references to the context :

9

a. What hand and brain went ever paired?

What heart alike conceived and dared?

What act proved all its thought had been?

What will but felt the fleshly screen?

b. The world will listen then as I am listening now.

Paper 6

3a. Write an essay on the significance of the title of Wilde's play *The Importance of Being Earnest*.

15

or

3b. Discuss Shaw's art of characterization with special reference to the characters of Eugene Marchbanks and James Morell.

or

3c. Comment on the role of the sea in *Riders to the Sea*.

4. Explain any **one** of the following with reference to the context :

9

a. I dislike arguments of any kind. They are always vulgar, and often convincing.

b. Oh! I am to choose, am I? I suppose it is quite settled that I must belong to one or the other.

c. I seen Michael himself.

Paper 7

5. Write an essay on any **one** of the following topics:

30

- a. Literature and Society
- b. Women Readers Today
- c. Gender Discrimination
- d. Short Stories and their Popularity
- e. Nature in English Poetry

Paper 8 Special Paper (To be submitted separately according to special paper option chosen)

American Literature

6. Attempt any **one** of the following:

20

- a. How does O. Henry handle the theme of art versus nature in his short stories? Answer with special reference to "The Last Leaf".
- b. The Steinbeck women characters make a conscious effort to regain a lost Eden. Discuss with special reference to "The Chrysanthemums".
- c. The poetry of Langston Hughes is a celebration of black aesthetics. Discuss.
- d. Attempt a critical appreciation of Muriel Rukeyser's "The Poem as Mask".
- e. Discuss the role of the narrator in Poe's *The Fall of the House of Usher*.

Indian Writing in English

6. Attempt any **one** of the following:

20

- a. Comment on the related themes of 'loneliness' and 'journey' in Ruskin Bond's short stories, with special reference to the story in your syllabus.

- b. "I believe the journey is more important than the destination." How is Bond's statement borne out in his short stories? Explain with special reference to "The Eyes are not Here".
- c. Write a critical appreciation of 'Our Casuarina Tree'.
- d. Comment on the social picture presented in Dattani's play *Bravely Fought the Queen*.
- e. Justify the title of *The God of Small Things*.

THIRD YEAR MID TERM EXAMINATIONS, 2010
ENGLISH (GENERAL)
PAPER IV

Time: 1 hour
Full marks: 25

Answer all three groups:

Group A

Answer any one of the following questions: **10 marks**

1. How does a moment become an eternity for a young widow? Explain with reference to the short story "A Moment of Eternity" by Bhabani Bhattacharya.
2. Discuss critically the character of Dasi in Narayan's "Dasi the Bridegroom."
3. Justify the title of Mulk Raj Anand's "Duty." How does Anand depict Indian society in this story?

Group B

Answer any one of the following questions: **10 marks**

1. Would you agree that Toru Dutt's poetry is one of recollection of one's childhood? Discuss with close reference to the poems in your syllabus.
2. What is the purpose of humour in Ezekiel's "Goodbye party for Miss Pushpa T. S"?
3. Attempt a critical appreciation of Jayanta Mahapatra's "The Abandoned British Cemetery at Balasore."

Group C

Answer any one of the following questions: **5 marks**

1. Write a short dialogue between two friends about use and misuse of mobile phones.
2. Write a short dialogue between a father and his son discussing the ill effects of smoking,

English Honours
Third Year

Full Marks 100
Time 4 Hours

PAPER V

1a "I fall upon the thorns of life! I bleed!" Is this an adequate description of Shelley's attitude to life? Answer with special reference to 'Ode to the West Wind' and 'To a Skylark'.

Or

b Write a critical appreciation of the Choric song in 'The Lotos Eaters'. 15

2 Explain one of the following with reference to the context : 10

a) The world should listen then
As I am listening now.

b) I sink back shuddering from the quest.
Earth being so good, would heaven seem best?
Now, heaven and she are beyond this ride.

c) Porphyria worshipped me; surprise
Made my heart swell, and still it grew
While I debated what to do.

PAPER VI

Full Marks: 25

1. Attempt any one of the following: (15)

- Write a note on the character of Jimmy Porter as an 'angry young man'.
- Comment on Synge's presentation of the 'generation gap' in 'Riders to the Sea'.
- Why does Shaw say 'no conflict, no drama'? Answer with reference to Act I of the text in your syllabus.

MID-TERM EXAMINATION 2009

**THIRD YEAR GENERAL
ENGLISH PAPER IV**

FULL MARKS: 25

TIME: 1 hour.

1. Answer any ONE of the following: (16 marks)

- a) Write a critical summary of Kamala Das' 'An Introduction'.
- b) Analyse the story of the unnamed woman in *A Moment of Eternity* representing women's eternal suffering?

2. Analyze any ONE of the following passages with reference to the context: (9 marks)

- a) "It is an old, old story, and the lay
Which has evoked Sita from the past
Is by a mother sung."
- b) "I felt Savitri in me, Savitri, who is ever in every woman. I could not be defeated
not unless I was lost, destroyed."

THIRD YEAR MID –TERM EXAMINATION -2010 (PAPER IV)

ECONOMICS

MARKS: 50

TIME: 2 Hrs

GROUP A

1. Attempt any three questions: 2*3=6

- a. Distinguish between economic growth and economic development.
- b. What is Human Development Index?
- c. Define economic planning.
- d. What is backward and forward linkage?
- e. What is meant by “freedom from servitude”?

Attempt any two questions: 2*15=30

- 2. Critically examine balanced vs. unbalanced growth theory. 15
- 3. Discuss the two way relation between population and economic development. 15
- 4. What are the types of foreign investment? Discuss the role of foreign investment in developing countries. 2+13=15
- 5. Is per capita income a better index of economic development? Justify. 15

GROUP B

6. Attempt any two questions: 2*2=4

- a. Distinguish between primary data and secondary data.
- b. State any two advantages and disadvantages of diagrammatic representation.
- c. Distinguish between variable and attribute.
- d. What is a pictogram?

Attempt any one question:

10*1=10

7. Define a statistical table. Explain the different parts of a table.
8. What is a pie diagram? Draw a pie-chart on the basis of the following data:

Principal Exporting countries of Cotton (1000 bales) – 1955-56

| U.S.A | India | Egypt | Brazil | Argentina |
|--------------|--------------|--------------|---------------|------------------|
| 6367 | 2999 | 1688 | 650 | 202 |

LORETO COLLEGE, KOLKATA
ELECTIVE BENGALI
MIDTERM EXAM'2009
IIIIRD YEAR
PAPER IV

FULL MARKS-25

TIME 1Hr

১। অনুবাদ করো।

৫

Honesty is the great virtue. If you do not decieve others, if you do not tell a lie, if you are strictly just and fair in your dealing with others, you are an honest man. honesty is the best policy. an honest man is respected by all.every man trusts an honest man. none can prosper in life if he is not honest.

২। কলকাতা শহরে একটি বিশেষ ধরনের জ্বর ছুড়িয়ে পড়ায়, সতর্কীকরনের একটি বিজ্ঞাপন লেখ।

১০

৩। আন্তর্জাতিক লিপি তে লেখ। ১০

আমাদের দেশে প্রাচীন কাল থেকে সংস্কৃতয় সমস্ত বিদ্যা থাকার দরুন, বিদ্বান এবং সাধারণের মধ্যে একতা অপার সমুদ্র দাড়িয়ে গেছে। বুদ্ধ থেকে চৈতন্য রামকৃষ্ণ পর্যন্ত- যারা লোকহিতায় এসেছেন, তারা সকলেই সাধারণ লোকের ভাষায় সাধারণকে শিক্ষা দিয়েছেন॥ পাণ্ডিত্য অবশ্য উৎকৃষ্ট, কিন্তু কটমট ভাষা-যা অপ্ৰাকৃত, কল্পিত মাত্র, তাতে ছাড়া কে আর পাণ্ডিত্য হয় না? চলিত ভাষায় কি আর শিল্পনৈপুণ্য হয় না?

Full Marks-100

3 Hrs.

১। বৈষ্ণব পদকর্তারা কোন রস কে শ্রেষ্ঠ রস বলে বিচার করেছেন, কেন? বুঝিয়ে দাও। ২০
অথবা

‘এ সখি হামারি দুখের নাহি ওর’ কোন পদকর্তার রচিত কোন পর্যায়ের পদ? এই পর্যায়ের বৈশিষ্ট্য আলোচনা করে পদটির কাব্য সৌন্দর্য্য আলোচনা করো। (২+৮+১০=২০)

২। ‘মেঘনাদ বধ’ কাব্যের ‘বারুণী - মুরলা-রমা’ সংবাদ অংশটি নিজের ভাষায় লেখ এবং মেঘনাদ বধ প্রসঙ্গে এই সংবাদের গুরুত্ব আলোচনা কর। ১০+১০=২০
অথবা

‘মেঘনাদ বধ’ কাব্যের প্রথম সর্গের নামকরণ দেখে যদিও মনে হয়, এই সর্গের প্রধান চরিত্র মেঘনাদ, কিন্তু গোটা সর্গ জুড়েই রাবনের অনন্য উপস্থিতি, এবং তার চরিত্রের অন্তর্গত বিষাদ তাকে প্রায় ট্র্যাজেডির নায়ক করে তুলেছে।’- এই মন্তব্যের সঙ্গে তুমি কি একমত? আলোচনা করো। ২০

৩। পুনশ্চ কাব্যগ্রন্থে কি কি বদলে ফেলেতে চাইলেন কবি? সেই বদলে যাওয়া সময়ের ইতিহাস এবং ‘ভূমিকা’ অংশ কে মনে রেখে পুনশ্চ কাব্যগ্রন্থের আবির্ভাব কে আলোচনা করো। ২০

অথবা

পুনশ্চ কাব্যগ্রন্থের অন্তর্গত ‘হেলোটা’ কবিতা টি আলোচনা করে বলো, কবি কিভাবে তার অন্তিম পর্যায়ের কবিতাতে বদল আনার চেষ্টা করেছেন? ১৪+৬=২০

৪। দলবৃত্ত ছন্দের বৈশিষ্ট্য ও কাঠামো আলোচনা করো। (উদাহরণ সহ) ১২
বা

উদাহরণ সহ সংজ্ঞা দাও। (যে কোন ৩ টি)
মাত্রা, পর্ব, চরণ, দল, যতি। ১২

৫। ছন্দলিপি প্রস্তুত করো- (যে কোন ২ টি) -৮

ক) সোনার জলে দাগ পড়ে না, খোলে না কেউ পাতা,
অম্বাদিত মধু যেমন যুথী অনায়াত
ভূত্য নিত্য ধূলা ঝাড়ে যত্ন পূরা মাত্রা,
ওরে আমার ছন্দোময়ী সেথায় করবী যাত্রা

খ) তোমার মাপে হয়নি সবাই
তুমিও হও নি সবার মাপে
তুমি মর কার ও ঠেলায়
কেউ বা মরে তোমার চাপে।

গ) মশায়! দেশান্তরী করলে আমায়
কেশনগরের মশায়।
বাঘ নয় ভালুক নই নয়কো জাপানী
বোমা নয় কামান নয় পিলে কাপানি।

ঘ) পাংলা করি কাটো প্রিয়ে কাংলা মাছটিরে
টটিকা তেলে ফেলে দাও সরষে আর জিরে।
ভেটকি যদি জোটে তাহে মাখো লঙ্কা বাটা,
যত্ন করি বেছে ফেলো টুকরো যত কাটা।

৬। প্রসঙ্গ সহ ব্যাখ্যা করো-/ যে কোন ৪ টি (৪x৫=২০)

- ক) 'হিমে কমল মরে ভানু সুখে রয়।
চাতক-জলদ কহি সে নহে তুলনা ॥
- খ) হিয়ার পরশ লাগি হিয়া মোর কান্দে।
পরান পিরীতি লাগি থির নাহি বাঞ্চে ॥
- গ) কোকিল আসিয়া করুক গান।
জমরা ধরুক তাহার তান ॥
- ঘ) করযুগ নয়ন মুদি চলু ডামিনী
তিমির পয়ানক আশে ।
কর কঙ্কন পণ ফণিমুখ বঙ্কন
শিখই ভুজগ গুরু পাশে ॥
- ঙ) হে বরদে, তব বরে, চোর রত্নাকর
কাব্য রত্নাকর কবি
- চ) এ বিলাপ কভু দেবী সাজে কি তোমারে?
- ছ) কিন্তু একে একে
গুথায়িছে ফুল এবে, নিবিছে দেউটি।
- জ) কেমনে ধরিবে প্রাণ তোমার বিহনে
এ অভাগী।

LORETO COLLEGE KOLKATA

COMPUTER APPLICATION

Mid-Term Examination III Yr 2010

PAPER VIII

40 Marks

Time : 1 ½ Hours

Answer any five questions

1. Who is an entrepreneur? How is an entrepreneur characteristically different from a manager? (4+4)
2. Indicate the environmental variables that encourage entrepreneurship. (8)
3. Define Business ethics. How can this be institutionalized in an enterprise? (2+6)
4. Write important characteristics of Transformation Leadership. (8)
5. Motivation is an essential ingredient to enterprise management. Explain in 80 (eighty) words. (8)
6. Describe product and process lay out illustrating their respective advantages and limitations. (8)
7. Explain briefly why management of raw material is an essential element of cost control of a product. (8)
8. Write short notes on any two : (4X2)
 - a. Resource management for corporate Excellence
 - b. SWOT Analysis
 - c. Intrapreneurship and Entrepreneurship
 - d. Total Quality Management
 - e. Maslow's theory on motivation

Computer Applications (Major)
Third Year Mid Term Examination 2010

Paper V

Ms. Sengupta
Ms. Chatterjee
Ms. Sarkar

Marks: 50
Time: 2 Hours

GROUP A

Answer any two of the following questions: (15)

- 1a) Define Non-deterministic and Deterministic Finite Automata. (2+2)
b) Illustrate an algorithm for converting Non-deterministic Automata to its equivalent Deterministic Automata. (3^{1/2})
2. Construct a minimum state automaton equivalent to the following finite Automata: (7^{1/2})

| STATES | INPUT | |
|--------|-------|----|
| | 0 | 1 |
| →q0 | q1 | q0 |
| q1 | q0 | q2 |
| q2 | q3 | q1 |
| *q3 | q3 | q0 |
| q4 | q3 | q5 |
| q5 | q6 | q4 |
| q6 | q5 | q6 |
| q7 | q6 | q3 |

3. a) State the difference between Deterministic and Non-deterministic Finite Automata? (1^{1/2})
b) A finite state machine is given below:

| STATES | INPUT | |
|--------|-------|----|
| | 0 | 1 |
| q0 | q2 | q1 |
| q1 | q3 | q0 |
| q2 | q0 | q3 |
| q3 | q1 | q2 |

In the above transition table, q0 is the initial state as well as final state. Find out whether the following strings are accepted by the machine or not:

(i) 101101

(ii) 000000

(3+3)

GROUP B

Answer **any one** of the following questions:

(15)

1. Explain different types of modulation schemes. Compare packet switching with circuit switching. State the role of network layer in OSI model. Classify and explain IP addresses. [5+4+2+4]
2. What is network topology? Describe coaxial cable and optical fibre. State the use of gateway and bridge in the network. Discuss the merits and demerits of ring and bus topologies. [2+4+4+5]

GROUP C

Answer **any one** of the following questions

(10)

1. What is a prototype? Under what circumstances is it beneficial to construct a prototype? Does the construction of a prototype always increase the overall cost of software development. [4+6]

Or

2. Explain how a software development effort is initiated and finally terminated in the spiral model. [10]

3. Write a short notes on : - (any two) [5+5]

- i) Software Engineering
- ii) Prototyping Model
- iii) Requirement Analysis

Group – D

1. Write a short notes on : - (any one) [5]

- i) Computer Ethics
- ii) Netiquette

Computer Applications (Major)
Third Year Mid Term Examination 2010

Paper VI

Ms. Sengupta
Ms. Chatterjee
Ms. Sarkar

Marks: 50
Time: 3 Hours

GROUP A

Write Java programs to do the following. Write suitable code to test and show that your program is working on comprehensive input.

Answer any one of the following questions: (20)

- 1) Write a program which multiplies two matrices having suitable dimensions.
- 2) Write a program that sorts a given set of numbers in an array.
- 3) Write a program to implement a class "student" with the following members:-
 - i) Name of the student
 - ii) Marks of the student
 - iii) Function to assign initial values
 - iv) Function to compute total average
 - v) Function to display the data

Write an appropriate main() to demonstrate the functioning of the above.

GROUP B

Answer any one of the following questions: (10)

1. Write a function ADDLENGTH that takes a list as input and returns a new list with the length of the input added onto the front of it.
2. Write a function F-TO-C that converts a temperature from Fahrenheit to Celsius. The formula for doing the conversion is: Celsius temperature = $[5 \times (\text{Fahrenheit temperature} - 32)] / 9$

GROUP C

Answer **any one** of the following questions:

(10)

- 1) Build a GUI Form that accept your name(maximum 20 characters) and Age(18-25) display it in uppercase letter.
- 2) Build a GUI that enter data for students like Reg No , Name , Dept, Semester , Result) . The form will have textboxes, labels, picture boxes and buttons) Button activities for cancel and undo must be defined.

Computer Applications (Major)
Third Year Mid Term Examination 2009

Paper V

Ms. Chandrani Sengupta
Ms. Swati Chatterjee
Ms. Soan Das

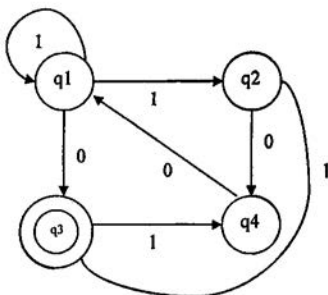
Marks: 50
Time: 2 Hours

GROUP A

Answer *any one* of the following questions:

(5)

1. Find the regular expression corresponding to the figure.



2. Prove $(1 + 00^*1) + (1 + 00^*1)(0 + 10^*1)^*(0 + 10^*1) = 0^*1(0 + 10^*1)^*$
3. Construct a Moore machine equivalent to the Mealy machine.

| Present State | Next State | | | |
|---------------|------------|--------|-------|--------|
| | a=0 | | a=1 | |
| | State | Output | State | Output |
| → q1 | q1 | 1 | q2 | 0 |
| q2 | q4 | 1 | q4 | 1 |
| q3 | q2 | 1 | q3 | 1 |
| q4 | q3 | 0 | q1 | 1 |

GROUP B

Answer *any one* of the following questions:

(10)

1. How many bytes are there in IP addressing with IPv4? State the different classes and ranges of Internet addresses. Find the network address for each address (also state the class)
 - i. 4.23.145.90
 - ii. 227.34.78.7
 - iii. 198.76.9.23 [1+3+6]
 - iv.
2. Explain the concept of Phase Shift Keying. State briefly the differences between TCP and UDP. [5+5]

GROUP C

Answer *any one* of the following questions

(10)

1. What do you mean by system testing? What are the different kinds of system testing techniques used in the system development process? [4+6]
2. Write a short note s on : - (any two) [5+5]
 - i) Waterfall Model
 - ii) Spiral Model
 - iii) Requirement Analysis

Computer Applications (Major)
Third Year Mid Term Examination 2009

Paper VI

Ms. Chandrani Sengupta
Ms. Swati Chatterjee
Ms. Soan Das

Marks: 25
Time: 1½ Hour

GROUP A

Answer *any one* of the following questions: (10)

1. Write a program in JAVA to implement stack.
2. Write a program in JAVA to add, subtract, transpose. Element should be given by user and it should be menu driven.
3. Create a class student whose data member are name, id, address, marks. Display the student details according to their marks. Input should be given by user.
4. Write a program to convert hexadecimal to binary and data should be given by user.

GROUP B

Answer *any one* of the following questions: (5)

1. (a) Two multiplied by eleven, divided by one plus six.
(b) List the output of seven minus four, plus eight multiplied by two (e.g. output =.....)
2. (a) Extract the fourth atom from a list of seven atoms.
(b) If a set of elements if a list, display the summation of two numbers, else multiply two numbers.

GROUP C

Answer *any one* of the following questions: (10)

- 1) Build a GUI Form that accept your name and Address and display it in uppercase letter.
- 2) Build a GUI that displays a picture with width and height scaled and to enter data for students like) Reg No , Name , Dept, Semester , Result) . The form will have textboxes, labels, picture boxes and buttons) Button activities for cancel and undo must be defined.

Computer Applications (Major)
Third Year Mid Term Examination 2009

Paper VIII

Ms. Rupa Ghosh

GROUP A

Answer *any two* of the following questions: (10x2)

1. Describe the impact of self and group dynamism in an enterprise.
2. Explain the importance of communication process in enterprise management.
3. Who is an entrepreneur? How is an entrepreneur characteristically different from an intrapreneur?
4. Explain briefly with suitable examples Maslow's need hierarchy based motivational theory.
5. Explain briefly with suitable examples the methods of effective leadership leading to its best styles.

GROUP B

Write short note on *any one* of the following (5x1)

- i. SWOT analysis
- ii. Business ethics
- iii. Green Entrepreneurship

THIRD YEAR MID TERM EXAMINATION -2010

Mrs. V. Poddar

**EDUCATION HONOURS
PAPER – V**

Time: 4 hr

Group – A

Marks. 13

I Answer any one question.

a) What is adjustment? Discuss in detail the criteria of good adjustment. (4+9)

OR

b) Discuss the causes of maladjustment. Discuss alcoholic and drug addicted disorder.

(6+7)

(40 copies)

Group- B Educational Guidance

Dr. R. Banerjee

Marks 12

1. Explain the concept of guidance. Why do we consider school guidance service significant for adolescent students ?

4+8

Mrs. V. Poddar

PAPER –VI

Marks 13

Group – A

I Answer any one question.

a) Define reliability. Discuss the different methods of determining reliability of a test. (3+10)

OR

b) Discuss, with examples, the different scales of measurement. (10)

Dr. R.Dawn

Answer the following question:

1 a. Compute mean and S.D from the frequency distribution.

3+3

| Scores | f |
|--------|----|
| 95-99 | 6 |
| 90-94 | 7 |
| 85-89 | 8 |
| 80-84 | 10 |
| 75-79 | 12 |
| 70-74 | 15 |
| 65-69 | 23 |
| 60-64 | 16 |
| 55-59 | 10 |
| 50-54 | 12 |
| 45-49 | 6 |
| 40-44 | 3 |

b. Compute P₃₀ and PR 71 from the above frequency distribution.

3+3

VII A – Educational Technology

Dr. R. Banerjee

Marks 13

Explain the concept of communication. Show your acquaintance with the idea of 'effectice communication'

5+8

Group- B

Dr. N. Dang

Marks 12

Answer any one of the following questions:

1. Give examples of Objectives in the Cognitive and Affective Domains of Bloom's Taxonomy.
2. Suggest a few aims that Curriculum planners should keep in mind.
3. Give an understanding of Knowledge-based Content Selection.

PAPER VIII

GROUP - A

TEACHER:DR.D.GUHA

MARKS:25

Answer any one:

1.a)Discuss the aims and organization of Primary education in England.

b)Give an account of the Secondary school system in U.K.with special reference to Modern and Grammar schools in detail

SECOND YEAR MID TERM EXAMINATION -2010
EDUCATION HONOURS
PAPER III **Time: 4 hrs.**

Group A

NAME Mrs A Roy Biswas

Marks 25

- 1) ANSWER ANY FIVE QUESTIONS FROM THE FOLLOWING- 5X5**
- a) Teacher pupil relationship during the Brahmanical system of education?
 - b) Aims of ancient indian education
 - c) Why was the bhuddhist education system more democratic?
 - d) What was the method of teaching in the bhuddhist education system?
 - e) Women's education in Brahmanical system of education?
 - f) What is a maktab and a madrassah?
 - g) What is a gurukul and a vihara?
 - h) What are the aims of Islamic education?

Group – B

Mrs. V. Poddar

Marks 17

I Answer any one question.

- a) Discuss the main recommendations of the Secondary Education Commission (1952-53) regarding aims and structure of secondary education. (17)
- b) Critically discuss the constitutional provisions of education in India. (17) 40 copies

Group – C

Dr. N. Dang

Marks = 8

Answer any one question of the following:

- 1. Discuss the efforts in the direction of Adult Education.
- 2. Narrate the features of Non-formal education.

SECOND YEAR MID TERM EXAMINATION – 2010

Mrs. V. Poddar

**EDUCATION GENERAL
(for GROUP A students Only)
PAPER –I**

**Time: 2 hrs.
Marks 25**

I Answer any five questions.

(2x5)

- a) Explain the literal meaning of the word 'psychology'
- b) What do you mean by 'Babinsky's Reflex'?
- c) Where is the word 'adolescence' derived from and what does it mean?
- d) What is meant by the word 'Gestalt'?
- e) Give two reasons to explain why forgetting is beneficial.
- f) Who was the first person to psychologise education?
- g) What are the primary emotions with which the child is born?
- h) Define Educational Psychology.

II Answer any one question.

- a) What do you understand by growth and development? Discuss the developmental aspects of adolescence. **(5+10)**
- b) What is memory? What are the factors of memory? Suggest some ways of improving memory. **(2+8+5)**

PAPER III

NAME: Mrs A Roy Biswas

MARKS 25.

1) ANSWER ANY ONE FROM THE FOLLOWING---

1 X 25= 25

- a) What are the aims of Radhakrishnan commission?
- b) What are the features of the national education movement?
- c) What were the recommendations of the Sargent Report?
- d) What were the recommendations on curriculum according to the Mudaliar commission?

SECOND YEAR MID TERM EXAMINATION – 2010

Dr. R. Banerjee

**EDUCATION GENERAL
(for GROUP B students only)
PAPER –II**

Time: 2 hrs.

Marks. 25

- | | |
|--|----|
| 1. Explain in brief the conditioning theory of Pavlov | 10 |
| 2. Explain the relationship between attention and interest | 10 |
| 5. Enumerate 5 laws of habit formation | 5 |

**EDUCATION GENERAL SECOND YEAR
PAPER III**

NAME: Mrs A Roy Biswas

MARKS 25.

1)ANSWER ANY ONE FROM THE FOLLOWING---

1 X 25= 25

- What are the aims of Radhakrishnan commission?
- What are the features of the national education movement?
- What were the recommendation of the Sargent Report?
- What were the recommendation on curriculum according to the Mudaliar commission?

THIRD YEAR GENERAL MID TERM EXAMINATION – 2010
EDUCATION
PAPER IV

Group A

Dr. R.Dawn

Marks 25

Answer any ONE question:

1. What are the different tools of evaluation in education? How does evaluation improve the teaching process? (10+15)

OR

2. a. Calculate the median of the following scores (2+2)

i) 24, 18, 19, 12, 23, 20, 21, 22

ii) 9, 14, 8, 13, 10, 10, 11, 12, 10

2. b. Arrange the following 40 scores into a frequency distribution using an interval of 5. Let the first interval begin with the Score 40. Calculate Mean and Standard Deviation from the following distribution: (5+8+8)

| | | | | | | | |
|----|----|----|----|----|----|----|----|
| 85 | 66 | 51 | 87 | 66 | 72 | 62 | 64 |
| 47 | 78 | 76 | 45 | 70 | 91 | 77 | 67 |
| 73 | 48 | 68 | 42 | 81 | 72 | 71 | 69 |
| 97 | 56 | 58 | 61 | 56 | 58 | 65 | 93 |
| 75 | 81 | 76 | 87 | 53 | 72 | 62 | 79 |

GROUP-B

NAME:- Mrs A Roy Biswas

MARKS-25

- 1) Define guidance. What are the needs of guidance? 5+20=25

OR

- 2) What are the different types of guidance? Elaborate by citing examples of each.

THIRD YEAR GENERAL MID TERM EXAMINATION – 2010
EDUCATION
PAPER IV

Group A

Dr. R.Dawn

Marks25

Answer any ONE question:

1. What are the different tools of evaluation in education? How does evaluation improve the teaching process? (10+15)

OR

2. a. Calculate the median of the following scores (2+2)

i) 24, 18, 19, 12, 23, 20 21, 22

ii) 9, 14, 8, 13, 10, 10, 11, 12, 10

2. b. Arrange the following 40 scores into a frequency distribution using an interval of 5. Let the first interval begin with the Score 40. Calculate Mean and Standard Deviation from the following distribution: (5+8+8)

| | | | | | | | |
|----|----|----|----|----|----|----|----|
| 85 | 66 | 51 | 87 | 66 | 72 | 62 | 64 |
| 47 | 78 | 76 | 45 | 70 | 91 | 77 | 67 |
| 73 | 48 | 68 | 42 | 81 | 72 | 71 | 69 |
| 97 | 56 | 58 | 61 | 56 | 58 | 65 | 93 |
| 75 | 81 | 76 | 87 | 53 | 72 | 62 | 79 |

GROUP-B

NAME:- Mrs A Roy Biswas
MARKS-25

- 1) Define guidance. What are the needs of guidance? 5+20=25

OR

- 2) What are the different types of guidance? Elaborate by citing examples of each.

25

THIRD YEAR MID-TERM EXAMINATION-2009
EDUCATION HONOURS
PAPER V

Time: 4 hrs.
F.M. 100

GROUP – A

Mrs. V. Poddar

Answer any one question:

1a) Discuss the symptoms and treatment of Schizophrenia. (8+7)

OR

1b) State the causes of maladjustment during adolescence. Discuss alcoholic and drug addicted disorder and mention their treatment. (6+6+3)

GROUP -B

Dr. R. Banerjee

Marks 10

1. Explain the concept of Guidance. How are School Guidance Services organized ? (10)

PAPER – VI
GROUP – A

Mrs. V. Poddar

Marks 15

Answer any one question:

1a) What are the different scales of measurement? Discuss with examples. (15)

OR

1b) What are objective tests? What are the advantages and disadvantages of objective tests?

(3+6+6)

GROUP - B

Total Marks:10

Teacher: Dr. D. Guha.

Q 1. Answer any one -

(10)

- a) What do you mean by dispersion of scores ? Which is the superior measure of dispersion? Why? What are its chief defects? Calculate the Q and SD of the following distribution.

| | | | | | | | |
|---------|--------|-------|-------|-------|-------|-------|----------------|
| Scores: | 10 -19 | 20-29 | 30-39 | 40-49 | 50-59 | 60-69 | |
| F | 2 | 4 | 10 | 8 | 4 | 2 | (5 + 5) = 10 |

- b) What are the uses of co-efficient of correlation ?
Calculate co-efficient of correlation by PMM of the following.

| | | | | | | | | | | |
|---|----|----|----|----|----|----|----|----|----|----|
| X | 56 | 53 | 60 | 52 | 58 | 43 | 48 | 57 | 56 | 55 |
| Y | 58 | 63 | 71 | 68 | 65 | 55 | 58 | 68 | 51 | 62 |

(5 + 5) = 10

Paper V11
GROUP - A

Dr.R. Banerjee

Marks 10

1.What are the steps followed in organizing Micro Teaching Classes ? (10)

GROUP -B

Dr. N. Dang

Marks 15

Answer any three of the following questions.

3X5

- Write about the importance and kinds of aims in a curriculum.
- Give the meaning of an objective. Identify the different kinds of objectives.
- Explain the levels of the cognitive domain in Bloom's Taxonomy with examples.
- Give the meaning of curriculum development and its features.

Dr. R. Dawn

Answer the following questions:

- 1. Give an account of the primary school system in UK and compare it with India? (10)**
- 2. Give an account of the Butler Act of 1944. Explain its significance in the evolution of a new pattern of education in England? (10)**
- 3. Write a short note on the nature and scope of Comparative education (5)**

**III YEAR MID TERM GENERAL EXAMINATION 2009
EDUCATION PAPER IV**

GROUP A

Time: 1 hour

Dr. R. Dawn

25 marks

Answer the following questions:

1. What is meant by evaluation? Discuss briefly the steps to be followed in organizing programme of evaluation in any educational institution? (2+8)

2. Arrange the following 40 scores into a frequency distribution using an interval of 5. Let the first interval begin with the Score 40. Calculate Mean and Median from the following distribution:

(4+3+3)

| | | | | | | | |
|----|----|----|----|----|----|----|----|
| 85 | 66 | 51 | 87 | 66 | 72 | 62 | 64 |
| 47 | 78 | 76 | 45 | 70 | 91 | 77 | 67 |
| 73 | 48 | 68 | 42 | 81 | 72 | 71 | 69 |
| 97 | 56 | 58 | 61 | 56 | 58 | 65 | 93 |
| 75 | 81 | 76 | 87 | 53 | 72 | 62 | 79 |

3. Write short note on any one of the following:

(5)

- a. Criterion Referenced test
- b. Evaluation of Curriculum
- c. Mention four types of objective tests with examples

GROUP - B

TEACHER A Roy Biswas

Marks 25

Answer any one from the following——

25 x 1 =25

- 1) what are the different types of guidance? How does these help us? 20+5
- 2) what is the meaning of guidance? Mention the needs of guidance? 5+20

**MID -TERM EXAMINATION 2010
THIRD YEAR POLITICAL SCIENCE HONOURS**

Dr. S. Chowdhury
Mrs. S. Mitra Deb
Ms. S. Dasgupta
Ms. S. Chaudhuri

**ALL QUESTIONS ARE COMPULSORY
PAPER - V**

1. Answer any one of the following
a. Aristotle's classification of governments
b. Plato's concept of communism (5X1=5)

2. Can Locke be regarded as the pioneer of liberalism? Argue your case.
OR

Examine Rousseau's contribution to political thought (20x1=20)

PAPER - VI

3. Answer any one of the following:
a) Tagore's nationalism
b) Duties of a Muslim ruler in medieval India (5x1=5)

4. Discuss the partition of Bengal in 1905
OR
Write a note on the Communist Party of India (20X1=20)

PAPER - VII

5. Answer any one short note:
a. Routinization of Charisma
b) Define Elite
6. Analyse how the military can intervene in politics
OR
What do you mean by Political system? Describe the classification of the political system. (20X1=20)

Paper - VIII

7. Answer any one of the short notes:
a) Public and Private Administration
b) Sala Model (5X1=5)
8. Analyse the role and function of the PMO (2X1=20)

OR
Discuss the changing role of the District Magistrate.

**MID-TERM EXAMINATION 2010
THIRD YEAR (GENERAL)
POLITICAL SCIENCE PAPER IV**

**Dr.S.Chowdhury
Mrs.S.Mitra Deb
Miss.S.Dasgupta
Miss.S.Choudhuri**

Answer all four questions

4x20 TIME: 2 HRS

1. Discuss the determinants of foreign policy.

2. What do you understand by Globalisation? Discuss the political dimension of the process.

Or

Analyse the Economic reforms made in India after 1991.

3. Analyse the structure and function of the Prime Minister's Office.

4. Discuss the human rights as given in the UN Declaration.

Or

Write a note on the State Human Rights Commissions in India.

MID-TERM EXAMINATION 2009

THIRD YEAR HONOURS – PAPERS V, VI, VII, VIII.

**Dr. S. Chowdhury
Mrs. S. Mitra Deb
Ms. S. Dasgupta
Ms. S. Chowdhuri**

Time : 4hrs.

1. Answer any four short notes :

(4x5 = 20)

a. Routinisation of Charisma.

OR

Locke's depiction of the State of Nature.

b. Aristotle's classification of Government.

OR

Influence of feudalism on the mediaeval political system.

c. Gandhi's Theory of Trusteeship.

OR

Role of the Cabinet Secretariat.

d. Liberal – Democracy.

OR

Main features of Socialist Management.

2. Answer any four long questions :

(4x20 = 80)

a. Examine the 'Elite Theory' of power distribution in society.

OR

'Hobbes is the founder of Scientific Materialism' – Explain.

b. Discuss the features of Greek political thought.

OR

Analyse the features of mediaeval political thought.

c. Discuss Kautilya's Saptanga Theory of State.

OR

Analyse the changing role of the District Magistrate.

d. Explain the various types of political participation.

OR

Discuss the evolution of Public Administration.

MIDTERM EXAMINATION 2009.
POLITICAL SCIENCE (GEN) PAPER IV.
THIRD YEAR GENERAL

Dr.S.Chowdhury
Mrs.S.Mitradeb
Miss.S.Dasgupta
Miss.S.Choudhuri

TIME:2HRS

Answer all four questions

- 1. Define Globalisation. Examine any two dimensions of Globalisation.**
Or,
How has Globalisation challenged the states in International Society.
- 2. Analyse the structure and functions of the Prime Minister's Office.**
Or,
Examine the structure and functions of the Cabinet Secretariat.
- 3. Analyse the status of Human Rights in India.**
- 4. Discuss the basic features of Indian foreign policy**

MIDTERM EXAMINATION 2009.
POLITICAL SCIENCE (GEN) PAPER IV.
THIRD YEAR GENERAL

Dr.S.Chowdhury
Mrs.S.Mitradeb
Miss.S.Dasgupta
Miss.S.Choudhuri

TIME:2HRS

Answer all four questions

- 1. Define Globalisation. Examine any two dimensions of Globalisation.**
Or,
How has Globalisation challenged the states in International Society.
- 2. Analyse the structure and functions of the Prime Minister's Office.**
Or,
Examine the structure and functions of the Cabinet Secretariat.
- 3. Analyse the status of Human Rights in India.**
- 4. Discuss the basic features of Indian foreign policy.**

HISTORY

Mid-Term Examination November 2010

Third Year General

Paper IV

Time: 2 Hours

Full Marks: 50

1) Answer any five of the following questions: (5 X 2=10)

- a) Name the two leaders of the Home Rule Movement.
- b) Why and when did Rabindranath Tagore renounce the knighthood?
- c) Who wrote "Hind Swaraj"?
- d) When and between whom was the Lucknow Pact signed?
- e) What is the meaning of Khuda-i-Khidmatgar? Who was the founder of this party?
- f) When and where was the Pakistan Resolution adopted?
- g) Who was the first Home Minister of India?
- h) Name the first Chief Election Commissioner of India.

Answer any two of the following questions: (2 X 20=40)

- 2) Assess the impact of the First World War on Indian economy and polity.
- 3) Analyse the role of Gandhi in the Khilafat and Non-Cooperation Movement.
- 4) Discuss in details all the factors which gave rise to communalism in India.
- 5) How did the accession of the Princely states take place under Jawaharlal Nehru?
- 6) How was parliamentary democracy established in India?

Third Year Mid-term Examination 2010

Full Marks: 100

History Honours

Time 4 hrs

Answer one question from Group A & one question from Group B in each of the following sections:

SECTION A: PAPER V

Group A

- a. Was Din-i-Ilahi a new religion? (5)
- b. Who were the Kachhwahas? What was their relationship with the Mughals? (5)

Group B

1. Examine the differences in the views of Abul Fazl and Badauni regarding the reign of Akbar. (20)
2. What was Aurangzeb's position on issues of religion and state? (20)

SECTION B: PAPER VI

Group A

- c. What was the ideology of the Derozians? (5)
- d. What is meant by the 'safety-valve theory'? (5)

Group B

3. How far did Bentinck implement a utilitarian blueprint? (20)
4. Assess the contribution of the Moderates to the spread of nationalist ideas. (20)

SECTION C: PAPER VII

Group A

- e. Examine Necker's role as finance minister. (5)
- f. What was date & significance of the fall of the Bastille? (5)

Group B

5. How did socio-economic causes contribute to the political crisis of the French monarchy in 1788-89? (20)
6. To what extent did the writings of the philosophers contribute to the French Revolution? (20)

SECTION D: PAPER VIII

Group A

- g. Why did the Weimar Republic suffer from instability from the beginning? (5)
- h. What was the COMECON? (5)

Group B

7. Was Germany treated unfairly by the Versailles Treaty? (20)
8. How far were the Truman Doctrine and Marshall Plan successful in containing communism? (20)

Third Year Mid term Examination
November 2009
History General Paper IV

Ms.S.Chakravarty
Mrs.A.Bandyopadhyay
Mrs.K.Hazra

Full marks: 25

Time: 1 hour

1. Answer any one of the following:

(1X1=1)

- a) Name two important leaders of the Home Rule movement.
- b) Name the first Home Minister of Independent India

2. Answer any two of the following:

(2X2=4)

- a) When and where was the Ghadar party founded?
- b) In which language was the journal 'Kesari' published? Who was its editor?
- c) What is communalism?
- d) Name two princely states which refused to accede to the Indian Union after its independence.

3. Answer any one of the following:

(1X20=20)

- a) Analyse the role of Gandhi in the first three satyagrahas.
- b) Discuss the various factors which gave rise to communalism in India.
- c) How did the Indian government try to solve the problem of the refugees in the aftermath of India's partition?

Third Year Mid-term Examination 2009
History Honours

Full marks: 100

Time: 4 hours

Paper V

Answer Question No.1 and any one of the following questions:

- 1) Answer any one question: (within 250 words) (1x5=5)
 - a) What were the implications of Akbar's policy of 'Sulh-i-kul'?
 - b) How did Nur Jahan influence imperial policy during Jahangir's reign?
- 2) Analyse Akbar's Rajput policy? Do you think that Akbar made a conscious attempt to incorporate Indian ruling elite into the Mughal imperial system? (20)
- 3) Trace the growth of the Maratha kingdom under Shivaji. (20)

Paper VI

Answer Question No.1 and any one of the following questions:

- 1) Answer any one question: (within 250 words) (1x5=5)
 - a) What is Orientalism?
 - b) What is Utilitarianism?
- 2) How would you assess the role of Raja Rammohun Roy in the cultural life of Bengal? (20)
- 3) What was the role of Western education in fostering nationalist feelings in India? (20)

Paper VII

Answer Question No.1 and any one of the following questions:

- 1) Answer any one question: (within 250 words) (1x5=5)
 - a) What was the significance of the storming of the Bastille?
 - b) How democratic was the Declaration of the Rights of Man & of the Citizen in France?
- 2) To what extent did the writings of the Philisophes contribute to the French Revolution? (20)
- 3) Why did the Industrial Revolution take place first in England? (20)

Paper VIII

Answer Question No.1 and any one of the following questions:

- 1) Answer any one question: (within 250 words) (1x5=5)
 - a) Why did the Weimar Republic suffer from instability from the very beginning?
 - b) What do you mean by the Berlin Crisis?
- 2) Was Germany treated unfairly by the Treaty of Versailles? (20)
- 3) Would you conclude that the Truman Doctrine & the Marshall Plan were designed to contain communism? (20)

PSYCHOLOGY HONOURS

PAPER V&VI

TIME 4 HOURS

FULL MARKS 100

Dr. R. Basu

Mrs. R. Bhattacharya

Miss. S. Chatterjee

Mrs. D. R. Jeejeebhoy

Answer separately for each teacher

Long Questions

1. Define Attitudes. Explain how attitude is formed. Once formed, can attitude be changed? If yes, how? (4+6+6)
2. Critically evaluate the content theories of work motivation. (16)
3. Define abnormal behavior. Discuss the role of different factors responsible for the development of abnormal behavior. (6+10)
4. Counselling helps in resolving interpersonal and intrapersonal conflicts-Discuss. (16)

Short Notes

(8x4)

5a. Stereotype

5b. Job Analysis

5c. Case Study Method

5d. What are the dynamic factors of adjustment and mental health.

General Proficiency – 4.

3RD YEAR MID TERM EXAMINATION, 2010

PSYCHOLOGY GENERAL
PAPER IV(A)

TIME 1 HOUR

FULL MARKS 25

Mrs. R. Bhattacharya
Mrs.D.R.Jeejeebhoy

Answer separately for each teacher

1. What is a psychological test? What are the characteristics and uses of a psychological test? (4+12)

2. Short notes (Any one) (8)
a. Individual Counselling
b. Group Counselling

General Proficiency – 1.

3RD YEAR MID TERM EXAMINATION, 2009

PSYCHOLOGY HONOURS

PAPER V

TIME 2 HOURS

FULL MARKS 50

Mrs. R. Bhattacharya

Miss. S. Chatterjee

Answer separately for each teacher

Long Questions (Answer any two)

1. Define Social Interaction. Describe in detail the different types of social interaction. (4+12=16)
2. Describe the brief history and development of Industrial Psychology with special reference to India. (16)
3. Describe in detail the different forms of non verbal communication. (16)
4. Short notes (Any two) (8x2=16)
 - a) Formation of attitude
 - b) Consistency Theory of attitude
 - c) Attribution

General Proficiency – 2.

PSYCHOLOGY HONOURS

PAPER VI

TIME 2 HOURS

FULL MARKS 50

Dr. R. Basu

Mrs. D. R. Jeejeebhoy

Answer separately for each teacher

Long Questions (Answer any two)

1. State the models and causes of abnormality. (16)
2. Define Stress. Discuss the causes and consequences of stress. (2+14 =16)
3. Define Normality. Elucidate the criteria of normality. (6+10= 16)
4. Short notes (Any two) (8x2=16)
 - a) Coping Techniques
 - b) Social Support in Coping
 - c) Differentiate between psychoses and neurosis

**2ND YEAR GEOGRAPHY GENERAL
MIDTERM EXAMINATION 2010**

THEORY PAPER

F.M. 25

Time 1hr

Answer all questions

Dr.S.Sahal

1. Discuss the consequences of drought. What are the different methods employed for the management of droughts? (10)

Mrs K.Banerjee

- 1. Discuss the characteristics of intensive cultivation with the example of rice cultivation in India. (10)**
- 2. Distinguish between small scale and large scale industries. (2.5)**
- 3. What is shifting cultivation? What is its impact on the environment?(2.5)**

2ND YEAR GEOGRAPHY HONOURS
MIDTERM EXAMINATION 2010
THEORY PAPER
F.M. 100
Answer all questions

Ms. R. Chatterjee

1. Discuss the composition of the atmosphere under the following heads – (4+3+3)
 - a) Variation with height
 - b) Variation with latitude and season
 - c) Variation with time
2. What is the Chapman – Ferraro Cavity? How is it related to the Van Allen Radiation Belts? (5)

Mrs. K. Banerjee

1. Discuss about the effect of monsoon on India's seasons. (10)
2. Illustrate the causes of norwesters in India. (5)
3. Classify natural vegetation of India. (5)

Mrs. Kumam.

1. Define mortality and what are its measures? Discuss the causes for the fall in mortality in the world? (10)
2. Short note: Mention 2 exogenetic and 2 endogenetic factors of infant mortality? (5)
3. Mention 4 fertility differentials. (5)

MRS S. Ganguly

1. Discuss the role of climate as a soil forming factor (10)
2. Discuss the different approaches to the study of soil. (10)
3. Distinguish between A and B layers (5)
4. Define Soil and Soil forming factors. (5)
5. Write the full form of Bh, C, g, f, Oi (5)

Dr. S. Sahai

1. Define Ecosystem. Discuss the various components of an ecosystem with suitable figures. 10
2. Classify ecosystems on the basis of various criteria, substantiate with examples. (5)

**SECOND YEAR GEOGRAPHY GENERAL
MID – TERM EXAMINATION, 2009**

K.BANERJEE

1. What is tribal economy? Where are they located in India? Explain any one of them. (2+2+6)
2. What are the different sectors of economy? Explain with reference to India. (4)
3. Differentiate between Commercial grain farming and Intensive paddy cultivation. (4)
4. What is Shifting Cultivation? (2)

Dr.S.Sahal

1. Discuss the various causative factors of drought with reference to India. What are its consequences? 4+6

Following questions are compulsory 3

7. What are desire line maps
8. What is meant by Topology

IIND YEAR MID-TERM EXAM 2009
GEOGRAPHYY HONOURS

Marks (60)

Ms.R. Chatterjee (CLIMATOLOGY) (15)

1. What are the natural causes of climate change? What is the IPCC? Who was awarded the 2007 Nobel Prize for Peace and for what? (5+3+2)
2. Who was James Van Allen? What is the Chapman-Ferraro cavity? (2+3)

Dr.S.Sahai Biogeography (15)

3. What are the different components of an ecosystem? Explain the same with one example each from the terrestrial and aquatic worlds. 6+4
4. Define Ecosystem. Ecosystem is an example of an open system-explain. 3
5. What is Homeostasis? (2)

Mrs S.GANGULY (Soil Geography) (15)

6. Define soil . Discuss soil structure and soil texture . (2+8)
7. Desribe a soil profile (3)
8. Distinguish between regolith and weathered mantle (2)

Mrs. S. Kumam (15)

1. Discuss the factors for the uneven distribution of population giving examples to illustrate the owner? (10)
2. Write short notes on:- (2.5x2)
 - a)Geologic composition of the Aravalis
 - b) Distribution and character of the Vindhya formations?

3RD YEAR GEOGRAPHY HONOURS
MIDTERM EXAMINATION 2010
PRACTICAL PAPER

Ms. R. Chatterjee

Geological Map Reading (15 marks)

- 1) Prepare a geological section along the given line and interpret the given geological map under the following heads - (6+3+3+3)
 - a) Succession of Rock Beds and Structure
 - b) Geological History
 - c) Topography in relation to Structure

Mrs. K. Banerjee

1. Calculate and draw a Lorenz curve to show concentration of urban population in selected districts of West Bengal, 2001. Interpret the diagram. (8+2)

| Name of the districts | Total Population | Urban Population |
|-----------------------|------------------|------------------|
| Uttar Dinajpur | 2441794 | 294443 |
| Dakshin Dinajpur | 1503178 | 196854 |
| Malda | 3290468 | 240940 |
| Jalpaiguri | 3401173 | 606882 |
| Darjeeling | 1609172 | 520432 |
| Coochbehar | 2479155 | 225618 |
| Murshidabad | 5866569 | 732734 |
| Nadia | 4604827 | 979519 |

Dr. S. Sahai

1. Draw a Rating Curve from the data given and interpret the curve. 8+2

| Gauge Height (mts.) | Discharge (m ³ s ⁻¹) |
|---------------------|---|
| 2.00 | 337 |
| 2.70 | 490 |
| 3.25 | 670 |
| 3.75 | 695 |
| 4.00 | 710 |
| 4.70 | 825 |
| 5.50 | 990 |
| 6.90 | 1,160 |
| 6.95 | 1,220 |
| 7.10 | 1,300 |
| 7.12 | 1,400 |
| 7.13 | 1,450 |

Mrs S. Sethwala

Prepare a landuse-landcover map from the given aerial photographs. (15)

**3RD YEAR GEOGRAPHY GENERAL
MIDTERM EXAMINATION 2010
THEORY PAPER**

F.M. 30

Time: 1hr 15mins

Answer all questions

Mrs. Ganguly

1. What are maps ? Discuss the characteristics and uses of maps . (10x1)

2. What are dot maps ? (5)

Mrs S. Sethwala

1) Discuss the factors responsible for the nucleation of settlements. Identify the different pattern of rural settlement and the causes for it . Give examples from India (10)

2) Differentiate urban landuse from rural landuse. (3)

3) What is landcover ? Give examples (2)

No. 20 PLATT'S EXERCISES ON GEOLOGICAL MAPS

22 uper

INDEX

CARBONIFEROUS



SANDSTONE



CALCAREOUS
SANDSTONE



LIMESTONE



CONGLOMERATE

SILURIAN



SHALE



MICACEOUS
SANDSTONE



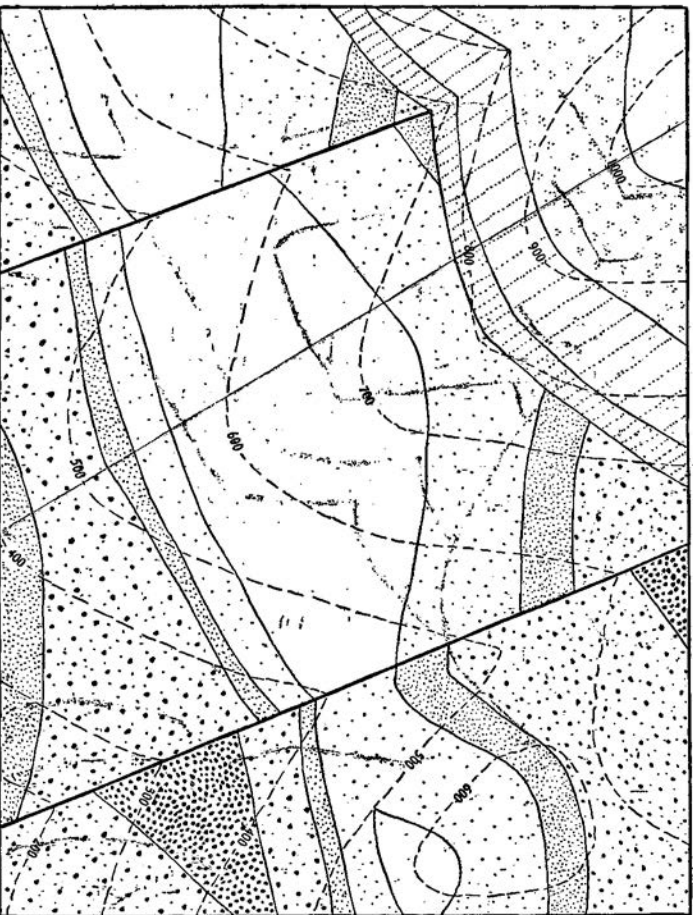
GRIT



QUARTZITE



GYPSE
Gypsiferous GRIT



3RD YEAR GEOGRAPHY HONOURS
MIDTERM EXAMINATION 2010
THEORY PAPER
F.M. 100
Answer all questions.

Mrs Kumam

1. What is poverty? Explain the relationship between the level of development and poverty?(10)
2. Short notes: a) Explain the term karewas? (5)
b) Discuss the importance of minerals in the Damodar valley (5)

Dr.S.Sahal

1. Trace the growth and development of the subject of Political Geography from the Classical era to the present 10
2. Briefly discuss Spkman's geo-strategic views, in comparison with Mackinder? (5)
3. Differentiate between boundaries and frontiers, substantiate with suitable examples. (5)

Mrs .S.Ganguly

1. Analyse the factors responsible for the evolution and growth of settlements (10)
Give examples .
2. Write short notes on perception regions . (5)
Define culture (5)

Mrs. K. Banerjee

1. Discuss the concept of region and explain its classification. (10)

Mrs S. Sethwala

- 1) Identify the macro landslide zones for India. What are the proximate causes for landslides in the above mentioned zones and measures taken for controlling landslides. Give examples from India. (10)
- 2) Explain the significance of satellite imagery in disaster mitigation measures , Give examples. (5)
- 3) India in the year 2010 has witnessed many natural disasters. Give an account of the areas affected and the role played by the government in mitigating these disasters. (5)

Ms. R. Chatterjee

- 1) What is the difference between the Idiographic and the nomothetic approaches? Discuss in the light of the Hartshorne-Schaefer debate? (3+7)

OR

- a) What are the basic tenets of Positivism enunciated by Comte? b) What do you understand by the 'Quantitative Revolution in Geography'? Do you think it changed the methodology of the discipline of geography? How? (4+6)

IIIIRD YEAR MID-TERM EXAM 2009
GEOGRAPHY GENERAL **Marks 50**

Dr.S.Sahai

25

- | | |
|---|-----------|
| 1. Discuss the various factors affecting the land use of an area. | 10 |
| 2. What are the principles governing the choice of land use? | 8 |
| 3. Briefly explain land and its various aspects. | 5 |
| 4. What is land use? | 2 |

Mrs. S Ganguly

25

Answer any one **10x1**

1. What is a map ? Classify different kinds of maps .
- OR**
2. Discuss the importance of Thematic Maps .

Answer any three **4x3**

3. What are dot maps ?
4. What are nominal ,ordinal and intermediate levels of measurements of maps .
5. Discuss the importance of accessibility maps .
6. Distinguish between chorochromatic and choropleth maps.

Following questions are compulsory **3**

7. What are desire line maps
8. What is meant by Topology

IIIIRD YEAR MID – TERM EXAM 2009
GEOGRAPHY HONOURS

Marks 75

MS. R. CHATTERJEE (10)

1. State 2 important contributions to Geography made by Hipparchus? (2)
2. State 2 important works each for the following – (4x2)
 - a) Al Biruni
 - b) Al Masudi
 - c) Bernhard Varepius
 - d) Claudius Ptolemy

Dr.S.Sahai

Political Geography (12)

1. Discuss the geostrategic views of Mackinder. **10**
2. What was Ratzel's view on growth of states? **2**

Ms K.Banerjee (10)

1. Explain the concept of region and discuss its classification. What is a planning region? **(8+2)**

Mrs.S Ganguly (10)

1. Social geography is what social geographers do — Discuss the statement . **(10)**

Mrs . S . Sethwala (15)

- 1) There is a growing realization that disasters are natural corollaries to inconsiderate development. **(10)**
- 2) Define human vulnerability. **(3)**
- 3) What has been the major paradigm shift in disaster management 2000 onwards. **(2)**

Mrs. S. Kumam (18)

- 1 a) What are the Salkhala rock types? Where are they found and of which geologic age? How do they differ from the younger intrusives? **(4)**
- b) What are the varied types of facies seen in the Cretaceous times? Where are they located? **(4)**
- c) What are the Panjal Traps? Where are they found? Which period do they belong to? **(2)**
- d) What are the Muth Quartzites and of which period do they belong to? **(2)**
- e) Where are the Muree Series located? Which period do they belong to and what are the rock types? **(2)**
- f) Which of the Tertiaries are not represented in Kashmir and why? **(2)**
- g) How are the Siwalik deposits different from the Muree series? Which period do the Siwalik belong to? **(2)**

GEOLOGICAL MAP-4

